

RWTH school news June 2021

for BeNeLux countries

Welcome

Dear teachers, dear parents,
dear pupils and prospective students,

our first newsletter for BeNeLux, which will be published twice a year from now on, contains many offers for study orientation in the coming weeks. Please feel free to pass on our newsletter to interested colleagues, parents and students.

With best regards
Your team at the Central Student Advisory
Service

Content

Offers for pupils and prospective students

- News / Dates
- Regular offers / on request
- Application, enrolment and study programmes
- Good to know
- Counselling services
- Useful links

Imprint

Photo: Martin Braun



Offers for pupils and prospective students

News / Dates

Register now!

RWTH Pupils' University (online)

During the NRW summer holidays, interested high school students have the opportunity to experience a subject of study from the „STEM“ sector (science, technology, engineering, mathematics) for a whole week and gain a first insight into the world of studies. The participants attend workshops, do experiments and listen to lectures.

The following offers are available:

Architecture, 5 - 8 July

Chemistry, 5 - 9 July

Mathematics, 5 - 9 July

Physics, 5 - 9 July

Computer Science, 12 - 16 July

Mechanical Engineering, 19 - 23 July

Civil and Environmental Engineering, 9 - 13

August

Electrical engineering, 9 - 13 August

STEM teaching, 9 - 13 August

Engineering, 10 - 13 August



Especially for female pupils:

Pupils' University Engineering Sciences for girls, 26 - 30 July

**6 July 2021 and 12 August 2021,
10 a.m. to 4 p.m.**

Workshop: Your approach to making a wise study decision (online)

This online workshop deals with the process of choosing a degree programme. In a small group, various topics are worked on interactively, for example interests and self-analysis as well as decision-making aids for choosing a degree programme. The participants receive a toolbox that supports them in their own study orientation.

Target audience: prospective students

Registration: www.rwth-aachen.de/Workshop/Studienentscheidung



**Please note:
all offers in German only**



Registration and all dates:

www.rwth-aachen.de/schueleruni

24 and 30 June 2021

„Ein Klick“ RWTH (online) - Explore RWTH Aachen University

Prospective students can explore RWTH Aachen University from their home computers through a programme of lectures, advisory services offered by the Central Student Advisory Service, the student councils and student initiatives, as well as through a virtual campus tour.

Target audience: school-leavers and prospective students

Registration:

www.rwth-aachen.de/einblickrwth

22 June and 5 July 2021, 5 p.m.

Lecture: How to apply correctly for admission-restricted Bachelor's degree programmes (online)

A numerus clausus - what is that actually? What role does the average grade of the school-leaving certificate play? When is the best time to apply? Our lecture explains the rules of the allocation of study places to prospective students so that they can better assess their chances and make good use of them.

Target audience: school-leavers and prospective students

Registration: www.rwth-aachen.de/go/id/cdgg

24 June 2021 from 5:15 p.m.

Long evening of study counselling

A range of counselling sessions conducted by telephone and online into the evening.

Target audience: prospective students

Web: www.rwth-aachen.de/langer-abend

1 July 2021, 3 p.m.

Contact - Your digital insight into the study of electrical engineering

After a presentation of our Electrical Engineering and Information Technology (B.Sc.) degree programme and our new Computer Engineering (B.Sc.) degree programme, our experts from the Student Advisory Service will explain how electrical engineering differs from other degree programmes and, of course, where the interfaces to other degree programmes lie. We have collected the most frequently asked questions from pupils and prospective students and compiled information from experts as well as student insights.

Participants will also have the opportunity to ask questions anonymously during the event, which can be answered directly by our student advisory service.

Target audience: pupils and prospective students

Web: <https://bit.ly/3oib8Jb>



**Please note:
all offers in German only**

10 - 17 August 2021**Introduction to spatial thinking and design with CAD (online)**

In this course, pupils who are interested in spatial design (e.g. in architecture or mechanical engineering) or who want to study engineering not only learn the basic structure and central functions of the popular CAD software Autodesk Inventor, but also how to use it competently. In groups of 4, they work together intensively via Zoom and support each other continuously. This success experience creates a lot of fun during the week. The professional CAD software as well as support software is made available to the participants free of charge.

Registration: <https://elearning.igpm.rwth-aachen.de/dgcad>

Your contact: Dr. Claus Pütz,
puetz@igpm.rwth-aachen.de

Save the date: 2 - 5 November 2021**University Hospitation Week**

Pupils who already have a concrete interest in a subject receive an insight into everyday life at university and are accompanied by tutors from the respective subjects.

Target audience: school-leavers and prospective students

Web: www.rwth-aachen.de/hospitationswoche

Save the date: November or December 2021**Information day for applicants from the province of Limburg (Netherlands)**

The Central Student Advisory Service and the International Office of RWTH Aachen University, together with the initiative „Studeren in Aken“ (Alcuinus), have for many years organised an information day at RWTH Aachen University in autumn especially for prospective students from the Dutch province of Limburg. The next information day will probably take place again in November or December. More information will be available here from September 2021:

www.rwth-aachen.de/suedlimburger

Fairs / Exhibitions

The advisors at the Central Student Advisory Service answer questions about studying and provide support with tips on deciding on a course of study at the following fairs:

- Onderwijsbeurs Zuid, Eindhoven, 24 - 25 September 2021
- Foire de l'étudiant, Luxemburg, November 2021

Please consider the Corona situation - if necessary the fairs might be changed to online versions or be cancelled.



Please note:
all offers in German only

Regular offers / on request

Information events about studying at RWTH Aachen University / FH Aachen

The association „studeren in Aken“ (project of K.A.V. Alcuinus) organises information events at Dutch schools to inspire and inform pupils about studying in Aachen. If you are interested in an information event for your school, please contact us: organisatie@studereninaken.nl

Target audience: pupils from the Dutch province of Limburg

Web: www.studereninaken.nl



Tour of Computer Science (in German)

A digital tour of computer science (duration approx. 1 hour) shows pupils the diversity of computer science. The computer science programme at RWTH Aachen University is presented: What are the contents? What is the organisation and structure like? How does teaching work in Corona times? We will also take a look at current research projects and the interdisciplinary areas. Computer science students accompany the event and report from their own experience.

Target audience: prospective Computer Science students

Web: www.informatik.rwth-aachen.de/go/id/nmbt

Depicting processes systematically - Introduction to UML (guiding programme)

Self-learning / download at any time

The symbolic language UML opens up diverse and meaningful possibilities for systematically representing topics and processes. The guidance programme offers the opportunity to get started with UML on your own. Realistic scenarios quickly demonstrate the usefulness of UML.

Available in German only.

Web: <http://schuelerlabor.informatik.rwth-aachen.de/leitprogramme/uml>

Your contact: Annabell Brocker M. Sc. RWTH, schuelerlabor@informatik.rwth-aachen.de



Photo: Martin Braun

Application, enrolment and study programmes

Correct school-leaving certificate?

On the website of the Conference of the Ministers of Education (Kultusministerkonferenz), prospective students of all nations can check which school-leaving certificate gives them access to study at a German higher education institution: www.anabin.de

The following applies for Belgium:

- Upper secondary school leaving certificate (German-speaking community)
- Diploma van secundair onderwijs
- Certificat d'enseignement secondaire supérieur (for Engineering Sciences in addition: Diplôme d'admission aux études / Diplôme d'admission à l'examen de candidat-ingénieur civil).

The following applies for The Netherlands:

- VWO
- HAVO in combinatie met HBO
- MBO in combinatie met HBO

(Please note the professional profile of your certificate!)

The following applies for Luxembourg:

- Diplome de Fin d'Etudes Secondaires
- Diplome de Fin d'Etudes Secondaires Techniques

German language skills

All Bachelor's degree programmes at RWTH are taught in German. International applicants must therefore provide proof of German language skills.

School-leaving certificates from Luxembourg and the German-speaking community of Belgium are recognised as proof of German. Prospective students from Limburg (NL) can be exempted from the language certificate if they can prove at least 5 points in their school leaving certificate for the subject German.

Further information on the website of the Language Centre of the RWTH:

www.rwth-aachen.de/go/id/lgod

More time to apply for studies?

Application deadline in the winter semester 2021/22

Normally, the general application deadline of 15 July is „irrevocable“. In the pandemic year 2021, it will be extended at RWTH (and most other German universities) until 31 July 2021.

[The latest information on deadlines and application procedures can be found at:](#)

www.rwth-aachen.de/bewerbung

Voluntary Service

If you decide to do a certified voluntary service, you should apply for the degree programme of your choice before you start your service. However, the service must be a German voluntary service or equivalent to it. An assigned study place can be „held“ until the end of the service and then reassigned.

Please seek advice beforehand!

www.bundesfreiwilligendienst.de

New eligibility criteria

The allocation of study places in Germany is changing! Outdated information on the web should no longer be trusted (uncritically). The focus (in future) will no longer be on the average grade of the school-leaving certificate. Instead, prospective students will find different opportunities at the various universities to prove their suitability for the subject they want to study. The student advisory service at RWTH Aachen University will be happy to provide information on this topic. For contact please see chapter „[Counselling Services](#)“.

For more information see:
www.rwth-aachen.de/go/id/evv

RWTH SelfAssessments

RWTH Aachen University offers prospective students a valuable orientation aid for a well-founded study decision with the SelfAssessments, SAM for short, which are obligatory for enrolment. However, the results of the SelfAssessments have no effect on the allocation of study places. After taking part in a SelfAssessment, a certificate of participation is issued online, which must be presented when enrolling for a Bachelor's or teaching degree programme at RWTH Aachen University. The certificate is not yet required for the application for a study place in admission-restricted study programmes, however, we recommend completing a SelfAssessment as early as possible. For the degree programmes Medicine and Dentistry no assessment test is necessary.

For more information see:
www.rwth-aachen.de/selfassessment

Who is responsible - contact person for legally binding application questions

The International Office of RWTH Aachen University is responsible for all applicants without German citizenship and/or foreign (non-German) university entrance qualification.

For more information see: www.rwth-aachen.de/cms/root/Die-RWTH/Einrichtungen/Verwaltung/Dezernate/Internationale-Hochschulbeziehungen/~rcx/Abteilung-2-1-Zugang-und-Soziales/

The Student Secretariat of RWTH Aachen University is responsible for all German nationals and for all applicants with a German university entrance qualification (Abitur); also for second degree applicants and all applicants with special applications.

For more information see:
www.rwth-aachen.de/studierendensekretariat

Start of lectures in the winter semester 2021/22 (for freshmen)

Courses for the winter semester 2021/2022 for first-year students start on 11 October 2021 and end on 4 February 2022.

All dates at:
www.rwth-aachen.de/semestertermine

Mandatory pre-study internship? Not in 2021!

All degree programmes at RWTH for which proof of a preliminary internship of 4 or 6 weeks is required for enrolment will waive this proof in the winter semester 2021/2022. The internship weeks must be made up during the course of study.

More details in the programme descriptions:
www.rwth-aachen.de/studienangebot

New courses of study

The current Electrical Engineering, Information Technology and Computer Engineering B.Sc. degree programme will become two degree programmes as of winter semester 2021/22: Electrical Engineering and Information Technology B.Sc. and Computer Engineering B.Sc. The new degree programme „Psychology polyvalent B.Sc.“ will also start in the winter semester 2021.

Programme descriptions at:
www.rwth-aachen.de/studienangebot

Smart Study Start

The Smart Study Start gives 400 participants more time to choose their field of study in the winter semester 2021/22 and provides a realistic overview of different degree programmes. During the programme, the basics are consolidated in a targeted manner and the participants learn strategies for their studies. [Addresses school leavers 2021 with an interest in studying natural sciences, engineering and economics](#)

Web: <https://smartstudystart.rwth-aachen.de>

Your contact: Aline Nüttgens,
nuettgens@cls.rwth-aachen.de

Good to know

New student advisor for STEM degree programmes (science, technology, engineering, mathematics) with a focus on girls

To advise girls interested in studying STEM subjects, Hilke Braun M.Sc., an environmental engineer, has been employed as a student advisor in the Central Student Advisory Service since April 2021. In addition to coordinating already well-known programmes such as the Pupils' University Engineering Sciences for girls, Hilke Braun will work with high school girls interested in STEM subjects. Schoolgirls who have already focused on STEM subjects at school will be given insights into the corresponding fields of study and careers through various event formats. The aim is to encourage female pupils to find their way into STEM studies and not to let supposed hurdles and obstacles stop them. More information will soon be available online, Hilke Braun welcomes interest and queries.

Your contact: hilke.braun@zhv.rwth-aachen.de



Photo: Hilke Braun

Counselling services

Study counselling by telephone or zoom

How do I find the right degree programme for me? When do I have to apply for a placement at university and where can I find the right contact person for my questions?

We currently advise and inform pupils and prospective students who have questions about choosing a degree programme, applying for a place at a university or other questions about studying exclusively contactless via telephone or Zoom.

Allocation of individual appointments at:

www.rwth-aachen.de/go/id/oelt

Brief advice from the Infocenter in the Central Student Advisory Office

We give brief advice by telephone at +49 241 80 94050 at the following times:
Mon, Tue, Thu, Fri: from 9 to 12:30 pm
Mon, Tue, Wed, Thu: from 1:30 to 4 pm
or via e-mail:

Studienberatung@rwth-aachen.de

www.rwth-aachen.de/schuelerberatung

Academic subject-specific counselling

The subject-specific study counselling advises on detailed study content, examination requirements, study structure and concrete study organisation:

www.rwth-aachen.de/fachstudienberatung

Student councils

Further source of information for a comprehensive impression of a degree programme:

www.rwth-aachen.de/fachschaften

Personal consultation through VOR-SCHUB (representation for students with chronic illness and disability)

Studying poses new challenges for students. For students with disabilities and chronic illnesses, there are many other challenges in addition to the challenges of studying. That is why VORSCHUB offers advice on all aspects of studying with disabilities and chronic illnesses. All counselling will take place via Zoom or telephone until further notice. Information about events for those affected is provided in the current newsletter.

Newsletter and further information:

www.rwth-aachen.de/vorschub

Instagram: [@vorschub_rwth](https://www.instagram.com/vorschub_rwth)

Your contact: Lena Schulte und Philip Balcar
vorschub@asta.rwth-aachen.de



Photo: Stefan Hense

Useful links

Overview of all degree programmes offered in Germany:

www.hochschulkompass.de

Information on the entire range of all degree programmes at RWTH Aachen University:

www.rwth-aachen.de/studienangebot

Up-to-date information about applying for a placement at university and deadlines:

www.rwth-aachen.de/bewerbung

SelfAssessments (SAM) are a valuable orientation aid for a well-founded study decision (only for RWTH degree programmes, except for medical degree programmes):

www.rwth-aachen.de/selfassessment

Calendar of interesting events for pupils and prospective students:

www.rwth-aachen.de/schnupperangebote_infotage

Brochure „Guide to studying - Orientation for prospective students“:

www.rwth-aachen.de/vorlesungsbesuch

Digital formats that can support the study choice process even in times of contact restrictions:

www.rwth-aachen.de/zsb-digitale-angebote

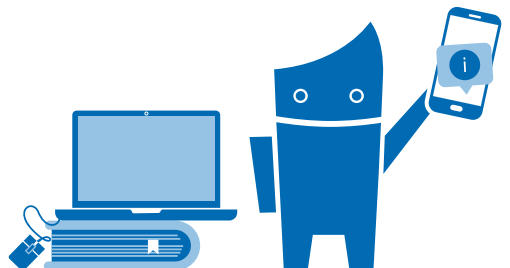
Eight different education labs at RWTH Aachen University offer a wide range of opportunities for extracurricular teaching.

www.rwth-aachen.de/schuelerlabore

Note

Well prepared with the RWTH's pre- and bridge courses

Knowledge gaps in maths and other subjects can already be filled during the summer holidays in the RWTH's preparatory courses. Maths and physics bridge courses are even available online all year round - free of charge for everyone. All courses at a glance:
www.rwth-aachen.de/vorkurse



Imprint

Frequency of publication: twice per year

Registration and deregistration:

<https://lists.rwth-aachen.de/postorius/lists/benelux-news.lists.rwth-aachen.de>

All information about the newsletter:

www.rwth-aachen.de/schulnews

Responsible:

Dr. Mandana Biegi

Head of Department

Central Student Advisory Service

RWTH Aachen University

Content, texts, translation and typesetting:

Dipl.-Kff. Jaana Schiwietz

Coordinator Pupil Programmes

Central Student Advisory Service

RWTH Aachen University

schuelerprogramme@rwth-aachen.de

Social Media



[facebook.com/
RWTHAachenUniversity](https://facebook.com/RWTHAachenUniversity)



twitter.com/RWTH



[youtube.com/user/
RWTHAachenUniversity](https://youtube.com/user/RWTHAachenUniversity)



instagram.com/rwthaachenuniversity